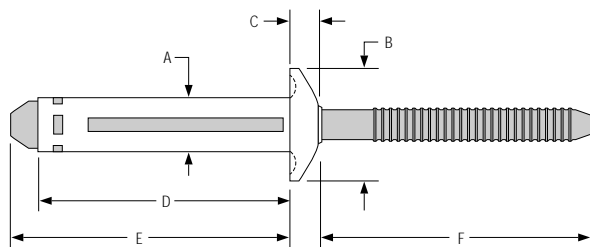
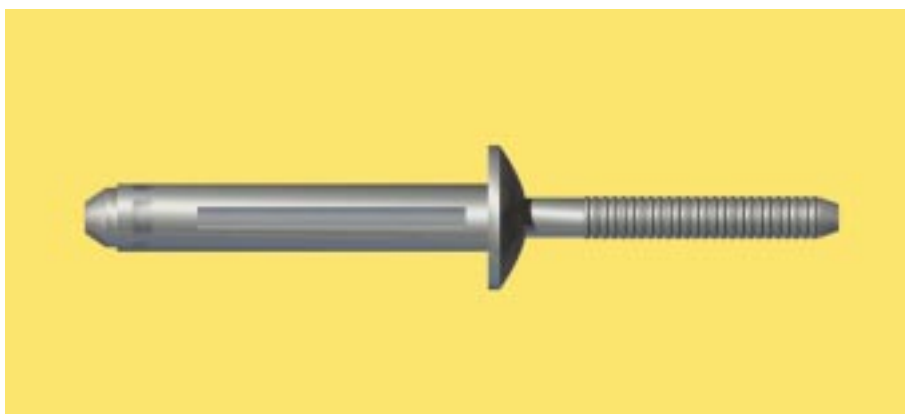


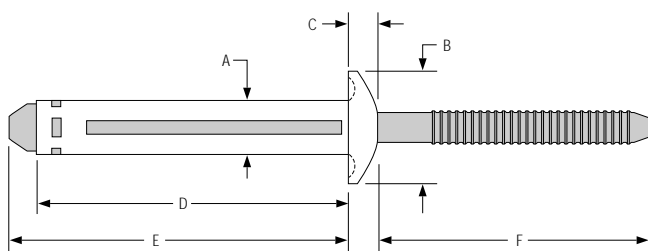
## Magna-Tite™ LockRivet™

An applied watertight sealant makes this rivet especially suitable for oversize holes and repair applications. A large blind-side footprint also makes the fastener ideal for installation in thin or low-strength materials such as aluminum, fiberglass and plastic.



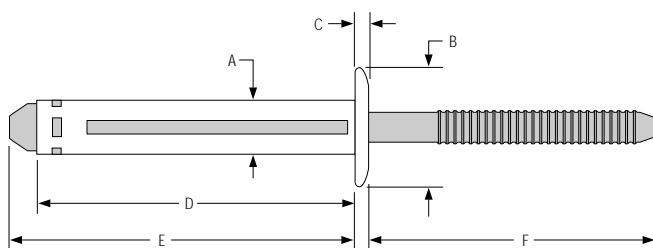
### Specifications—Protruding Head Hole Size nom=.205-.221 A=.199 B=.453 C=.117 F min=.940

Dia. (No.)	Part No.	Grip Range	D max	E max
3/16 (6)	MTP-B6-5S	.050 - .312	.890	1.020
	MTP-B6-6S	.100 - .375	.940	1.070
	MTP-B6-8S	.250 - .500	1.090	1.220
	MTP-B6-10S	.375 - .625	1.215	1.345
	MTP-B6-12S	.500 - .750	1.340	1.470



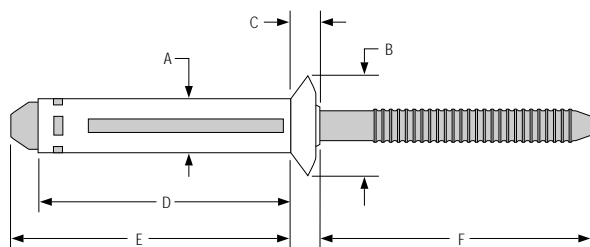
### Specifications—Shavable Head Hole Size nom=.205-.221 A=.199 B=.453 C=.117 F min=.940

Dia. (No.)	Part No.	Grip Range	D max	E max
3/16 (6)	MTS-B6-8S	.050 - .500	1.010	1.140
	MTS-B6-12S	.050 - .750	1.260	1.390



### Specifications—Low Profile (non-structural) Hole Size nom=.205-.221 A=.199 B=.453 C=.052

Dia. (No.)	Part No.	Grip Range	D max	E max	F min
3/16 (6)	MTLP-B6-4	.050 - .250	.840	1.040	1.189
	MTLP-B6-8	.187 - .500	1.090	1.140	.939
	MTLP-B6-12	.375 - .750	1.260	1.390	1.143
	MTLP-B6-12X	.050 - .750	1.260	1.390	1.143


**Specifications—100° Countersunk Oval Head** Hole Size nom=.205-.221 A=.199 B=.355 C=.117 F min=.940

Dia.	Part No.	Grip Range	D max	E max
3/16	MTV-B6-5S	.070 - .312	.910	1.040
	MTV-B6-7S	.160 - .410	1.010	1.140
	MTV-B6-8S	.250 - .500	1.090	1.220
	MTV-B6-10S	.375 - .625	1.215	1.345
	MTV-B6-12S	.500 - .750	1.340	1.470

**Installed Values in Nominal Grip (lbs.)**

		Head Styles:			
		Protruding	Shavable	Low Profile	Oval
3/16	Shear	630	630	630*	630
	Tensile	450	450	450	450
	Pin Retention	90	90	90	90

*In Minimum Grip. 350 lb. Shear Strength Over Minimum Grip.*

**Material**

Sleeve	Aluminum
Pin	Aluminum

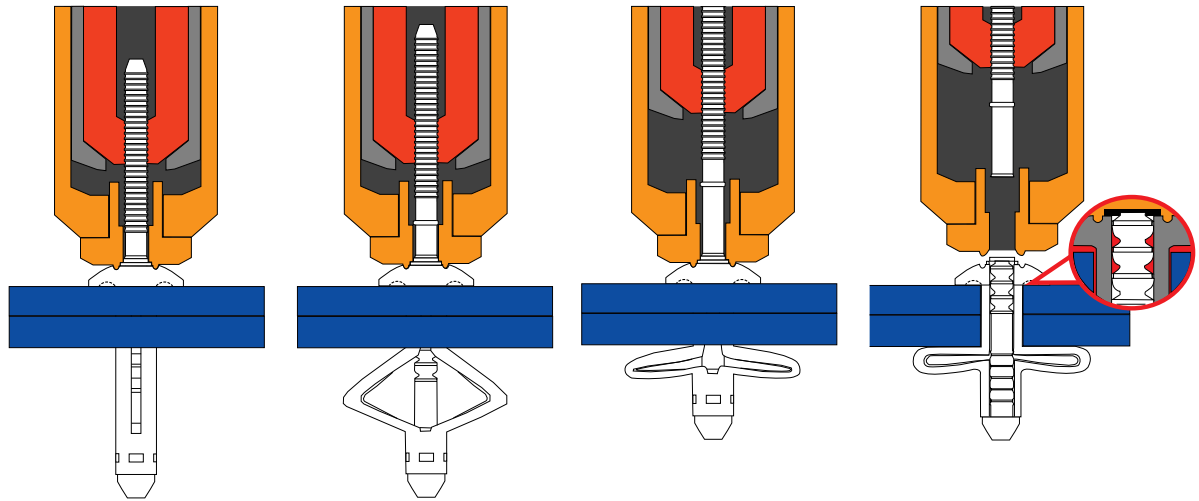
## Installation Tooling

Dia.	Installation Tool	Nose Assembly	Type	Use	
3/16	2015	125280 (Insert)	Pneudraulic	Prod. or Maint. & Repair	
	202	99-3310F/P	Pneudraulic	Production	
	2480	99-3310F/P	Hydraulic	Production	
1/4	2015	125280 (Insert)	Pneudraulic	Prod. or Maint. & Repair	
	202	99-3311F/P	99-3312F/P	Pneudraulic	Production
	2480	99-3311F/P	99-3312F/P	Hydraulic	Production

F--For use with Low Profile and Shavable Head styles. Replacement insert #123021

P--For use with Protruding and Oval Head styles. Replacement insert #124185

## Installation Sequence



[Click Here to view animation of installation sequence](#)

*\*(Solid rivet-look parts may be shaved after pintail is clipped)*

## Part Number Identification

**MT P - B 6 - 8 (S)**

